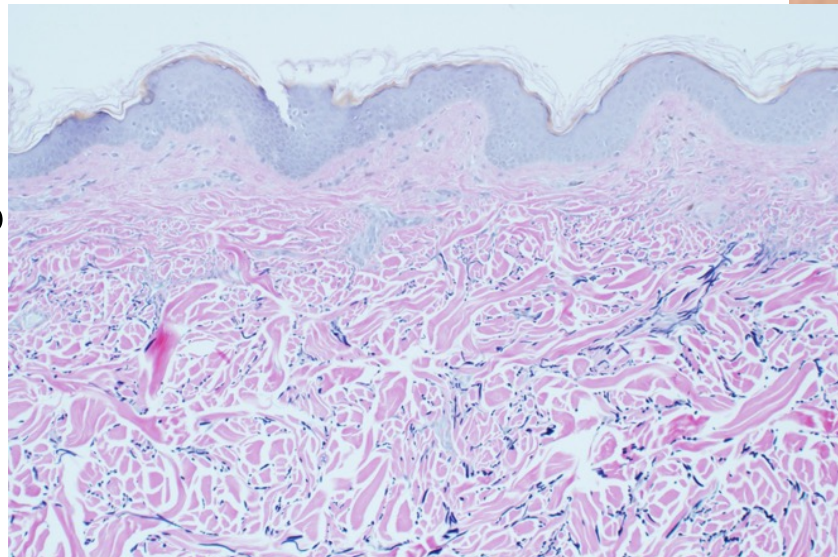


November Case of the Month

- HPI:
 - 65y/o female with asymptomatic rash on the posterior neck x 8 months
 - Pt wears a hijab, states covered areas on head and neck are often hot/sweaty
 - Tried topical triamcinolone and clobetasol without improvement
- Exam:
 - Yellow and flesh-colored non-follicular papules on the lateral and posterior neck as well as a few on antecubital fossae

• What is your diagnosis?



A patient with “plucked chicken skin”

University of Missouri

Department of Dermatology

Brianna Castillo MD

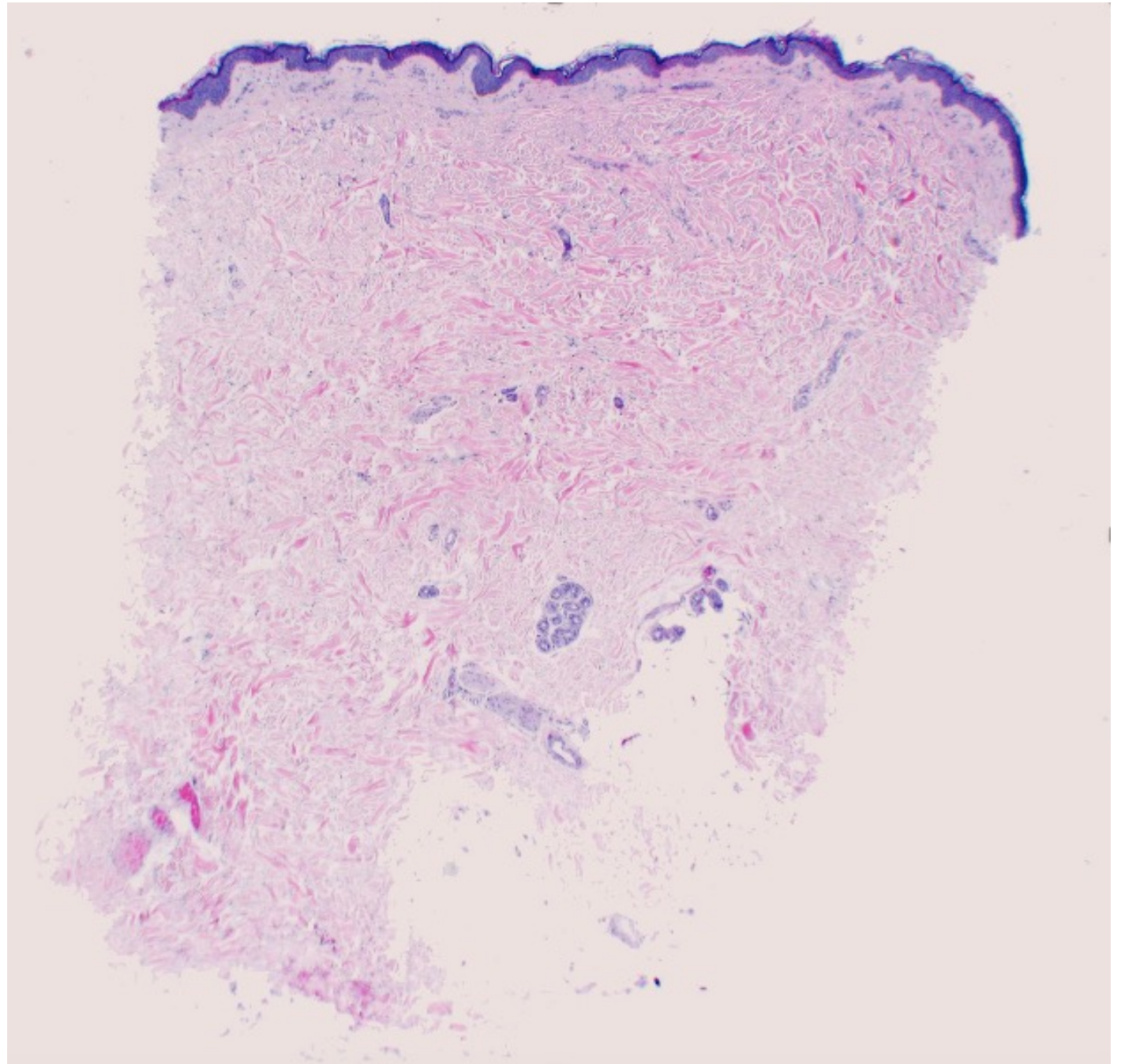
Kara Braudis MD, Susan Zurowski MD

Case Presentation

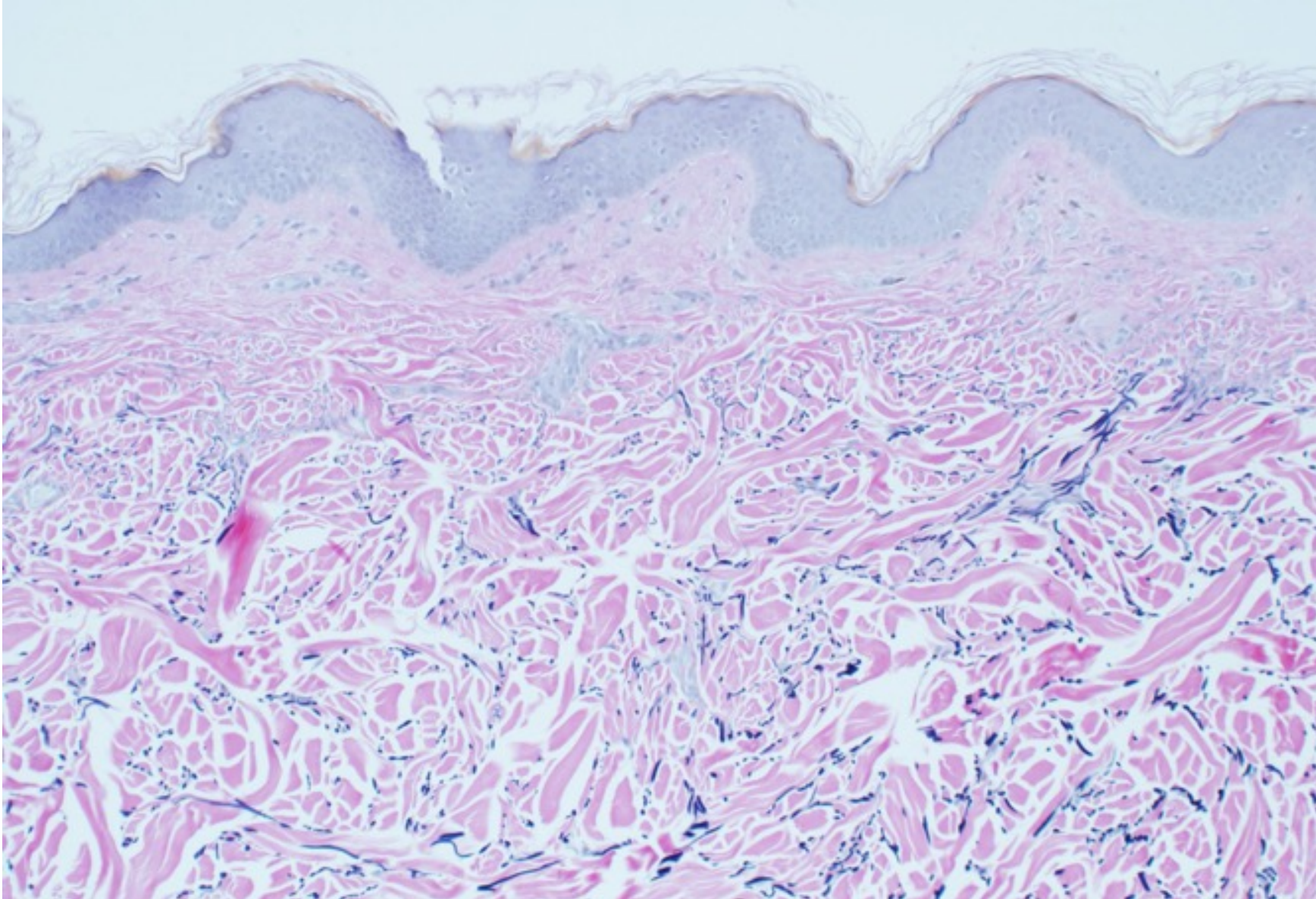
- HPI
 - 65y/o female with asymptomatic rash on the posterior neck x 8 months
 - Pt wears a hijab, states covered areas on head and neck are often hot/sweaty
 - Tried topical triamcinolone and clobetasol without improvement
- Exam:
 - Yellow and flesh-colored non-follicular papules on the lateral and posterior neck as well as a few on antecubital fossae
- PMH:
 - hypothyroidism
- Meds:
 - levothyroxine
- Allergies:
 - NKDA



Histopathology



Histopathology



Verhoeff-van Gieson stain showing normal elastic fibers (black) in the reticular dermis and absent elastic fibers in the papillary dermis

Diagnosis: Pseudoxanthoma elasticum-like papillary dermal elastolysis

- PXE-LPDE is an acquired condition occurring most commonly in women after the sixth decade of life
- There are overlapping features with white fibrous papulosis, another benign condition that can be argued is the same entity.
- Chronic sun exposure has been implicated in its pathogenesis, although our patient has been sun protected for most of her life
- No specific therapy has been shown to be successful

What are the systemic manifestations of pseudoxanthoma-like papillary dermal elastolysis?

- A. Angioid streaks
- B. Gastrointestinal hemorrhage
- C. Angina
- D. Renovascular hypertension
- E. None

Which stain would give the alternate diagnosis of pseudoxanthoma elastolysis?

- A. Von Kossa staining calcium deposition black
- B. Toluidine blue staining mast cells black
- C. Alizarin red staining calcium deposition black
- D. Fontana-Mason staining melanin black

References

- Rongioletti et al. PXE-like PDE: a large case series with clinicopathological correlation. JAAD 2012